

Installation Hardware

Product Catalogue



Matchmaster Catalogue



V Block Assembly Complete Heavy Duty

11MM-620

- » V-block assembly complete, Heavy duty
- » Complete with Clamp, U-bolt and nuts/washers
- » Plated for corrosion protection



V Block Assembly Complete Standard

11MM-665K

- » V-block assembly complete, Standard
- » Complete with Clamp, U-bolt and nuts/washers
- » Plated for corrosion protection



Swivel Mount 1.0m

- » Complete with alloy stays and base

Product Code	Meter
11MM-AM1000K	1.0m
11MM-AM1500K	1.5m
11MM-AM2000K	2.0m



Base Only for Adjustable Mount

11MM-AMBASE

- » Used with 11MM-MT15R, 11MM-MT20R Mast
- » The AMBASE allows the mast to be adjusted to any angle
- » Pre-drilled for roof mounting
- » Complete with nut/bolt for connection to MT10/15/20R
- » Galv-bond steel construction
- » Made in Christchurch New Zealand



Extra Long Base Only 340mm

11MM-AMBASE-L

- » The AMBASE-L is 340mm and is used with MT10/15/20/30/40R straight mast
- » The AMBASE allows the mast to be adjusted to any angle
- » Pre-drilled for roof mounting
- » Complete with nut/bolt for connection to MT10/15/20/30/40R
- » Galv-bond steel construction
- » Made in Christchurch New Zealand



Cable Clip Black 7mm (100)

11MM-CC7B

- » Round cable clip
- » Ideal for telephone, coaxial and data cable
- » Tough and flexible
- » Discrete design



Cable Clip White 7mm (100)

11MM-CC7W

- » Round cable clip
- » Ideal for telephone, coaxial and data cable
- » Tough and flexible
- » Discrete design

Matchmaster Catalogue



Cable Ties White (100)

- » UV resistant to prolong useful life outdoors
- » One piece construction self locking nylon cable ties

Product Code	Width
11MM-CT140W	140mm
11MM-CT200W	200mm
11MM-CT380W	380mm
11MM-CT430W	430mm



Cable Ties Black (100)

- » UV resistant to prolong useful life outdoors
- » One piece construction self locking nylon cable ties

Product Code	Width
11MM-CT200B	200mm
11MM-CT380B	380mm



Heavy Duty Antenna Nest

11MM-HDN

- » Galvanised finish
- » Heavy duty construction
- » Used with a U bolt to clamp antenna or masting
- » Design with grip teeth for extra stability to prevent antenna shifting



Guy Cleat Surface Anchor

11MM-GC/4

- » Can be mounted to any tin/timber
- » Galvanised finish
- » Convenient 4 pack
- » Heavy duty construction



Guy Clamp Assembly Mast

- » Used to tie guy wire to a mast
- » Clamp kit for attaching to a mast
- » Includes guy plate and lock ring



Product Code	Diameter
11MM-GCA32	1.25"
11MM-GCA38	1.5"



Hockey Stick Stay Bar Collar (25-32mm)

11MM-HC01

- » Used to connect and support stay bar to mast
- » Dual lock on bolts for extra stability to prevent shifting
- » Compact, simple design
- » Galvanised finish
- » Heavy duty construction

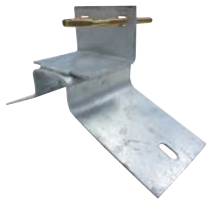
Matchmaster Catalogue



Mount Curved Fascia

- » Hot dipped galvanised finish
- » Right angle steel tube to fit to the roof fascia
- » Protrudes 180mm from fascia surface
- » Heavy duty construction

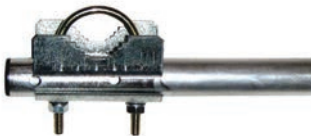
Product Code	Length
11MM-HS500	0.5m
11MM-HS1000	1.0m
11MM-HS1200	1.2m
11MM-HS1500	1.5m
11MM-HS2000	2.0m
11MM-HS2500	2.5m



Iron Roof Mount

11MM-IRM

- » Shaped to fit the profile of standard steel roof ridge capping
- » Includes U-bolt, nuts and washers
- » Galvanised finish
- » Heavy duty construction



Jigger Boom 500mm Galvanised

11MM-JB500G

- » 500mm “Jigger-boom” used to extend mount from mast
- » Complete with Clamp, U-bolt and nuts/washers
- » Galv-bond steel construction
- » Made in Christchurch New Zealand



1.5m Mast Extension Kit

11MM-MEK

- » Used to extend a mast by an extra 1.5m
- » Includes U-bolt, nuts and washers
- » Galvanised finish
- » Design with grip teeth for extra stability to prevent mast shifting
- » Bolts onto new or existing satellite mounts



Mast Extension Pole

- » Used to extend a mast by an extra 0.5m
- » Galvanised finish

Product Code	Length
11MM-MEP05	0.5m
11MM-MEP1	1.0m



Mast Only for Adjustable Ridge Mount

- » 1000mm straight mast, used with 11MM-AMBASE/L
- » Galv-bond steel construction
- » End cap
- » Drilled hole for AMBASE mounting
- » Made in Christchurch New Zealand

Product Code	Length
11MM-MT10R	1.0m
11MM-MT15R	1.5m
11MM-MT20R	2.0m
11MM-MT40R	4.0m

Matchmaster Catalogue



Pipe Clamp 27mm

11MM-PIPECLAMP

- » 27mm Pipe clamp, spare part
- » Complete with U-bolt, clamp, nuts/washers
- » Plated for corrosion protection



Cable Dispenser Frame

11MM-REELO1

- » Metal frame that supports a roll of cable
- » Allows easy access and dispensing of cable
- » Metallic steel finish
- » Heavy duty construction



Ridge Mount

- » Ridge roof mount
- » Flexible wide base for "ridge" mounting
- » Hot-dipped galvanised corrosion protection
- » 300mm mounting pole
- » Made in Christchurch New Zealand

Product Code	Length
11MM-RM03	0.3m
11MM-RM05	0.5m
11MM-RM10	1.0m



Adjustment Stay 1.0m-1.75m (without U Bolt)

11MM-SB1000A

- » 100-1750mm telescopic steel stay bar for bracing Satellite mount
- » Pre drilled both ends (no clamp)
- » Galv-bond steel construction
- » Complete with self-tapping screw to lock length
- » Made in Christchurch New Zealand



Adjustment Stay 1.0m-1.75m with U Bolt

11MM-SB1000AU

- » 1000-1750mm telescopic steel stay bar for bracing antenna mount
- » Pre drilled one end, pipe clamp at other end
- » Galv-bond steel construction
- » Complete with self-tapping screw to lock length
- » Made in Christchurch New Zealand



Stay 1.0m Alloy Single

11MM-SB10A

- » 1000mm Aluminium stay bar for bracing antenna mount
- » Pre drilled one end, pipe clamp at other end
- » Solid extruded aluminium construction
- » Made in Christchurch New Zealand

Matchmaster Catalogue



Stay 1.0m Galvanised Single

11MM-SB10G

- » 1000mm Steel stay bar for bracing antenna mount
- » Pre drilled one end, pipe clamp at other end
- » Galv-bond steel construction
- » Made in Christchurch New Zealand



Adjustable Stay 1.5M-2.9M with U bolt

11MM-SB1500AU

- » Pre drilled one end, pipe clamp at other end
- » Galv-bond steel construction
- » Complete with 2 self-tapping screws to lock length
- » Made in Christchurch New Zealand



Stay 1.5m Alloy Single

11MM-SB15A

- » 1500mm Aluminium stay bar for bracing antenna mount
- » Pre drilled one end, pipe clamp at other end
- » Solid extruded aluminium construction
- » Made in Christchurch New Zealand



Stay 1.5m Galvanised Single

11MM-SB15G

- » 1500mm Steel stay bar for bracing antenna mount
- » Pre drilled one end, pipe clamp at other end
- » Galv-bond steel construction
- » Made in Christchurch New Zealand



Stay 2.0m Alloy Single

11MM-SB20A

- » 2000mm Aluminium stay bar for bracing antenna mount
- » Pre drilled one end, pipe clamp at other end
- » Solid extruded aluminium construction
- » Made in Christchurch New Zealand



Stay 2.0m Galvanised Single

11MM-SB20G

- » 2000mm Steel stay bar for bracing antenna mount
- » Pre drilled one end, pipe clamp at other end
- » Galv-bond steel construction
- » Made in Christchurch New Zealand



Stay 2.5m Galvanised Single

11MM-SB25G

- » 2500mm Steel stay bar for bracing antenna mount
- » Pre drilled one end, pipe clamp at other end
- » Galv-bond steel construction
- » Made in Christchurch New Zealand

Matchmaster Catalogue



Adjustment Stay 0.5m-0.90m (without U Bolt)

11MM-SB500A

- » 500-900mm telescopic steel stay bar for bracing Satellite mount
- » Pre drilled both ends (no clamp)
- » Galv-bond steel construction
- » Complete with self-tapping screw to lock length
- » Made in Christchurch New Zealand



Adjustment Stay 0.5m-0.90m With U Bolt

11MM-SB500AU

- » 500-900mm telescopic steel stay bar for bracing antenna mount
- » Pre drilled one end, pipe clamp at other end
- » Galv-bond steel construction
- » Complete with self-tapping screw to lock length
- » Made in Christchurch New Zealand



Adjustment Stay 0.7m-1.30m (without U Bolt)

11MM-SB700A

- » 700-1300mm telescopic steel stay bar for bracing Satellite mount
- » Pre drilled both ends (no clamp)
- » Galv-bond steel construction
- » Complete with self-tapping screw to lock length
- » Made in Christchurch New Zealand



Adjustment Stay 0.7m-1.30m with U Bolt

11MM-SB700AU

- » 700-1300mm telescopic steel stay bar for bracing antenna mount
- » Pre drilled one end, pipe clamp at other end
- » Galv-bond steel construction
- » Complete with self-tapping screw to lock length
- » Made in Christchurch New Zealand



Silicon Adhesive Tube

11MM-SI01

- » Multi-purpose silicon adhesive
- » Low odour
- » Permanently flexible
- » Industrial grade
- » Ultra violet resistance
- » Superior adhesion



Screw Tek 100mm Loose

11MM-ST100

- » Self tapping
- » Used on wood and metal construction



Screw Tek 125mm Loose

11MM-ST125

- » Self tapping
- » Used on wood and metal construction

Matchmaster Catalogue



Screw Tek 25mm Loose

11MM-ST25

- » Self tapping
- » Used on wood and metal construction



Screw Tek 50mm Loose

11MM-ST50

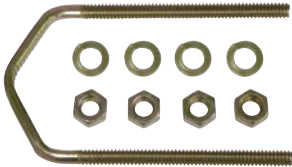
- » Self tapping
- » Used on wood and metal construction



Screw Tek 75mm Loose

11MM-ST75

- » Self tapping
- » Used on wood and metal construction



U-Bolt Only Standard

11MM-UB6M

- » Used for mounting antennas to masts using a nest
- » Includes nuts and washers
- » Strong and sturdy design



Mount Under Eave

11MM-UEM

- » Bolts underneath eave to provide base for a Aerial Hockey stick
- » Used with 11MM-HS 500/1000/1200/1500//2000/2500
- » Note, may require stays to be used with longer mounts
- » Galv-bond steel construction
- » Comes with nuts/bolts
- » Made in Christchurch New Zealand



matchmaster.co.nz

0800 AERIAL 237 425

Products may vary from images shown
and all specifications are correct at
time of printing