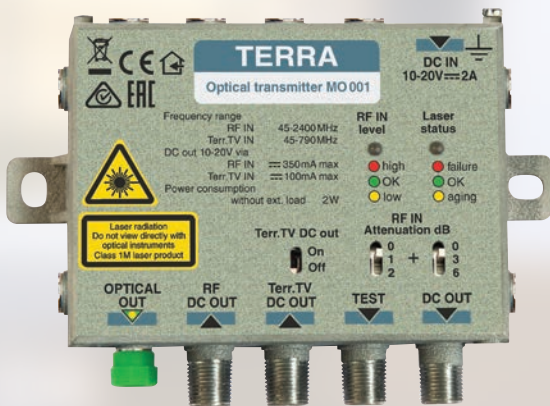




Fibre Optics

Product Catalogue



Matchmaster Catalogue



Fibre SC-APC To SC-APC Duplex 0.5m

20MM-FPLD05

- » 1 Required PER MO418/428
- » Used with Terra Fibre TX and Optical splitters



Fibre Patchlead, Simplex SC/APC-SC/APC 1M (MO418/428L to Splitter)

20MM-FPLS1

- » Fibre Patch lead SC/APC - SC/APC 1M
- » Patching from MO4** Terra fibre transmitter to SO/OSP splitters



Fibre Patchlead, Simplex FC/APC-SC/APC 1M (MO001 to Splitter)

20MM-FPLS21

- » Fibre Patch lead FC/APC - SC/APC 1M
- » Patching from MO001 Terra fibre transmitter to SO/OSP splitters
- » Patching from SC/APC to OD007 optical node



Fibre Patchlead, Simplex LC/APC-FC/APC 0.5M

20MM-FPLS305

- » Fibre Patch lead LC/APC - FC/APC 0.5M
- » Patching from LC/APC panel to FC/APC OD007/MO001



Blanking Plate for 20MM-FPP3P

20MM-FPP-B-BLANK

- » Blocks the unused slot for the 20MM-FPP3P to prevent dust



6-Port-Plate for 20MM-FPP3P

20MM-FPP-SCD6

- » 6-port plate used with FPP3P and Bulk-head adaptor SC/APC-SC/APC
- » Removable for ease of termination



19"-1RU Fibre Patch-3-Slot (up to 36 Connections)

20MM-FPP3P-SHELF

- » Used to make up rack friendly optical splitters
- » Fibre management
- » Adjustable rack depth



Fibre EDFA 12.5dBm 2 Output, 32 Nodes

20MM-HA51162

- » Produces 16dBm of power
- » Used with a 16-way optical splitter in Analogue/Digital system
- » Used with a 32-way optical splitter in a digital only system

Matchmaster Catalogue



Fibre EDFA 2 x 16dBm Output, 1RU Dual Power Supply with SNMP (128 Nodes)

20MM-HA5420A-02

- » Fibre EDFA
- » 2 x 16dBm outputs, 128 nodes
- » 1RU 19" rack mount
- » Dual power supplies
- » SNMP server



Fibre EDFA 4 x 12.5dBm Output, 1RU Dual Power Supply with SNMP (128 Nodes)

20MM-HA5420A-04

- » Fibre EDFA
- » 4 x 12.5dBm outputs, 128 nodes
- » 1RU 19" rack mount
- » Dual power supplies
- » SNMP server



Fibre EDFA 4 x 16dBm Output, 1RU Dual Power Supply with SNMP (256 Nodes)

20MM-HA5423A-04

- » Fibre EDFA
- » 4 x 16dBm outputs, 256 nodes
- » 1RU 19" rack mount
- » Dual power supplies
- » SNMP server



Fibre EDFA 8 x 16dBm Output, 1RU Dual Power Supply with SNMP (512 Nodes)

20MM-HA5427A-08

- » Fibre EDFA
- » 8 x 16dBm outputs, 512 nodes
- » 1RU 19" rack mount
- » Dual power supplies
- » SNMP server



Fibre EDFA 16 x 16dBm Output, 1RU Dual Power Supply with SNMP (1024 Nodes)

20MM-HA5430A-16

- » Fibre EDFA
- » 16 x 16dBm outputs, 1024 nodes
- » 1RU 19" rack mount
- » Dual power supplies
- » SNMP server



Fibre EDFA 32 x 16dBm Output, 1RU Dual Power Supply with SNMP (2048 Nodes)

20MM-HA5434A-32

- » Fibre EDFA
- » 32 x 16dBm outputs, 2048 nodes
- » 1RU 19" rack mount
- » Dual power supplies
- » SNMP server

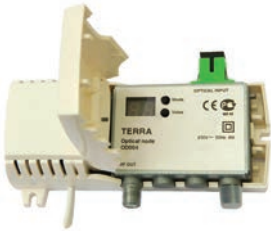
Matchmaster Catalogue



Standalone 6dBm Fibre Transmitter TX SAT/TER 1310nm FC/APC (8 Nodes)

20MM-MO001

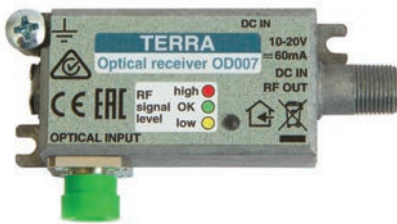
- » Compact Fibre Optic Transmitter 47-2400MHz, 1310nm 6dBm
- » SAT and DTT inputs with DC by pass for remote feeding
- » LED indication of input signal level and laser diode aging
- » RF test output / DTT input port
- » Robust die-cast housing
- » Optical output FC/APC



Terr/SAT Fibre Receiver

20MM-OD004A

- » Very compact optical receivers for cost sensitive installations with extended frequency range 2400MHz
- » Electronic setting of all parameters
- » AGC based on optical input level
- » Digital indication of optical input level and other parameters
- » Connectors: RF output - type F, optical - SC/APC
- » Mains powered or 10-20VDC powering through RF output



Fibre Mini Receiver 75dB μ V Output 10-20VDC Powering

20MM-OD007

- » Compact Fibre Optic node 47-2400MHz
- » AGC based on RF input signal level
- » LED indication of RF signal level
- » Robust die-cast housing
- » DC powered via RF output, 10-20VDC
- » Optical input FC/APC



Terra mini Fibre Receiver 70dBuV output with dual SC/APC connectors 47-2400MHZ with built in WDM

20MM-OD007H

- » Wide band mini Fibre Receiver for single wire Pay and FTA systems - 47-2400MHz
- » 70dBuV output per carrier
- » AGC based on RF signal output level
- » Robust die-cast housing providing high level screening
- » Can be powered either by RF output F-Connector or by local 3.5/1.3 mm DC jack (power supply sold separately) with 10-20V DC operating range
- » LED indication of RF level



SC/APC Chassis Joiner x 2, 6 Per SCD6 Plate

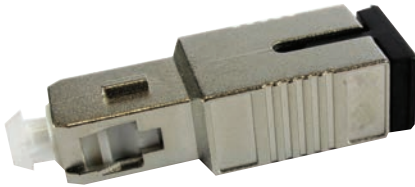
20MM-SC/APC-SC/APC

- » Used in FPP-SCD6
- » Dust caps front and back
- » Individually packed

Matchmaster Catalogue

Optical Attenuators

- » Attenuator SCA single mode male to female 3dB, 5dB and 10dB
- » Optical attenuators offer complete flexibility to correct power levels in your network
- » High quality
- » Metal assembly
- » Complete with dust caps for protection of interfaces



Product Code	Product Description
20MM-OAF3	Attenuator SC Single Mode Male to Female 3dBm
20MM-OAF5	Attenuator SC Single Mode Male to Female 5dBm
20MM-OAF10	Attenuator SC Single Mode Male to Female 10dBm

Optical Splitters

- » Low insertion loss
- » High directivity
- » Good stability and reliability
- » Excellent polarization insensitivity
- » Operating wavelength: 1310nm or 1550nm



Product Code	Product Description
20MM-OSP2	2 Way Optical Splitter (Stand Alone)
20MM-OSP4	4 Way Optical Splitter (Stand Alone)
20MM-OSP-1*6-S-SC	6 Way Optical Splitter (Stand Alone)
20MM-OSP8	8 Way Optical Splitter (Stand Alone)
20MM-OSP16	16 Way Optical Splitter (Stand Alone)
20MM-OSP-1*2-19NZ	2 Way 1-RU-19" Optical Splitter (Rack-Mount)
20MM-OSP-1*4-19NZ	4 Way 1-RU-19" Optical Splitter (Rack-Mount)
20MM-OSP-1*6-19NZ	6 Way 1-RU-19" Optical Splitter (Rack-Mount)
20MM-OSP-1*8-19NZ	8 Way 1-RU-19" Optical Splitter (Rack-Mount)
20MM-OSP-1*12-19NZ	12 Way 1-RU-19" Optical Splitter (Rack-Mount)
20MM-OSP-1*16-19NZ	16 Way 1-RU-19" Optical Splitter (Rack-Mount)
20MM-OSP-1*32-19NZ	32 Way 1-RU-19" Optical Splitter (Rack-Mount)

Optical Splitters (Module)

- » AT series optical splitters offer a range of configurations with single and twin inputs and outputs
- » Uses the industry standard connector SC/APC for optical connection
- » Mounts on the AT series 1RU frame
- » Compact design for low density use of rack space



Product Code	Product Description
20MM-SO414	Optical Splitter Module 1x4 with 7dB Insertion Loss
20MM-SO418	Optical Splitter Module 1x8 with 10dB Insertion Loss
20MM-SO424	Optical Splitter Module Twin 1x4 with 7dB Insertion Loss Per Split

Matchmaster Catalogue



Optical TX SMATV

- » This unit offers high power output at 6dBm (10dBm for 20MM-M0428L-4D55-1550) extending your design reach can be ordered as 1310nm to 1550nm wavelength
- » LAN control offers WEB monitoring and management of the device
- » Uses the industry standard connector SC/APC for optical connection
- » LAN control connector is the RJ45 industry standard connector
- » Mounts on the Terra AT series 19" IRU frame
- » Complimenting these units are the fully redundant power supplies, UP412 and UP413

Product Code	Product Description
20MM-M0418L-4D55-1550	Optical TX SMATV 1550nm Single 6dBm
20MM-M0428L-4D55-1550	Optical TX SMATV 1550nm Twin 6dBm



matchmaster.co.nz

0800 AERIAL 237 425

Products may vary from images shown
and all specifications are correct at
time of printing